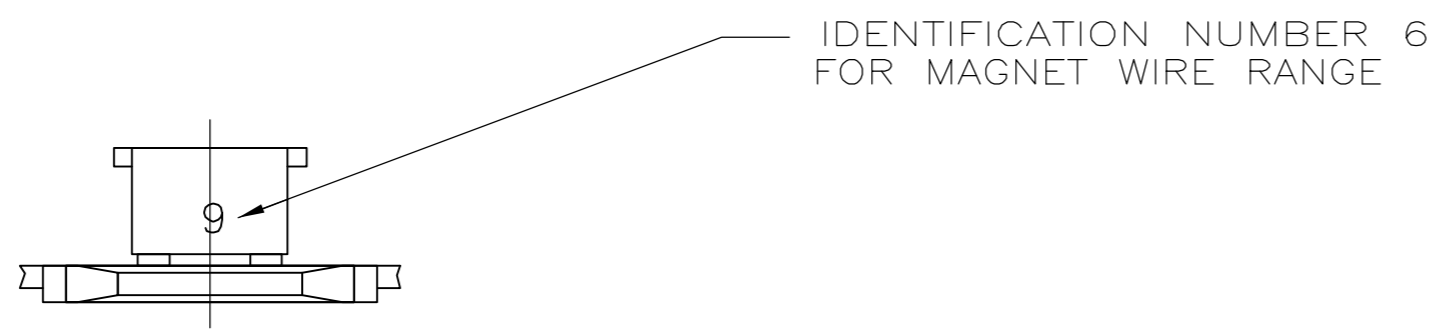
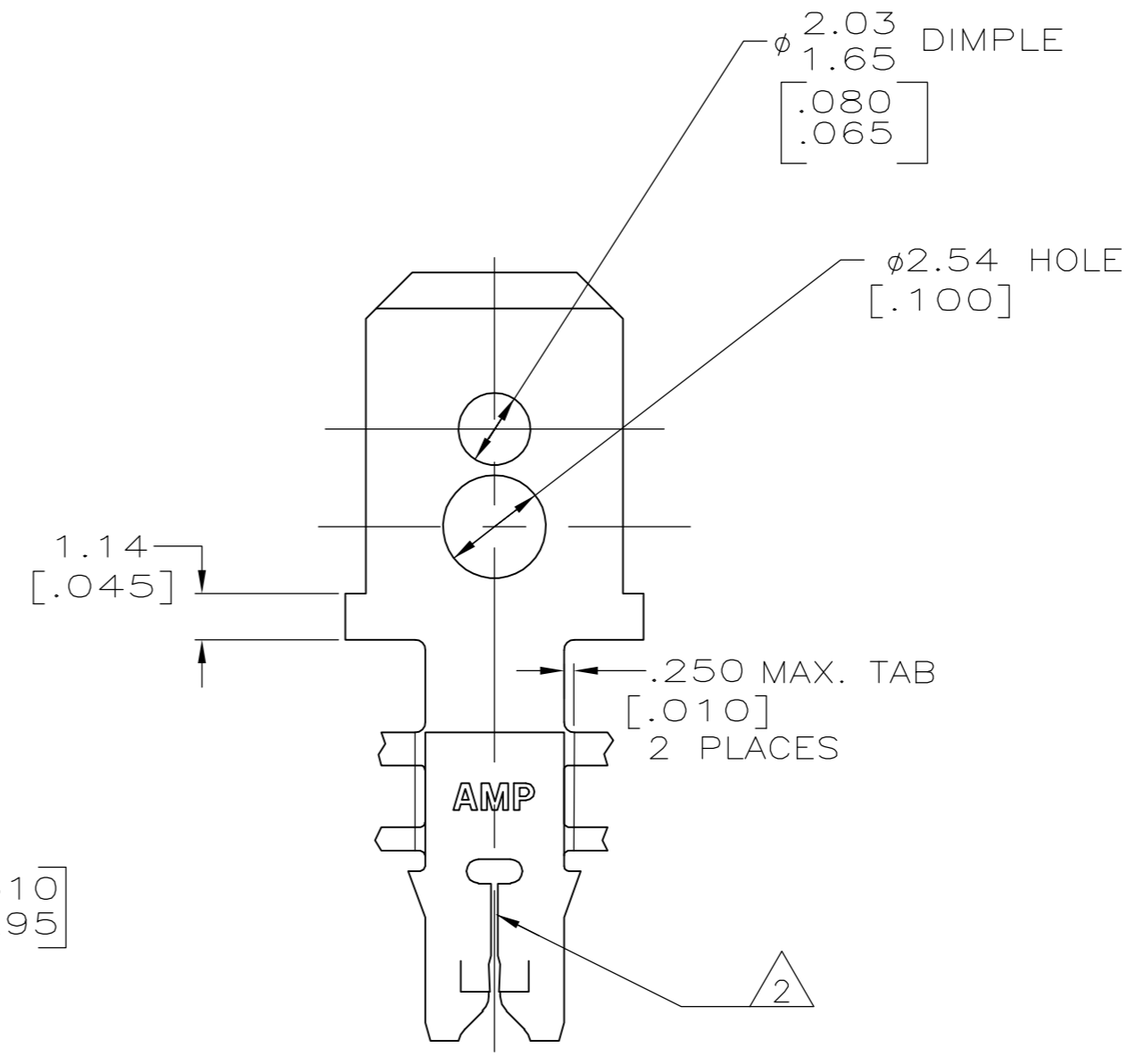
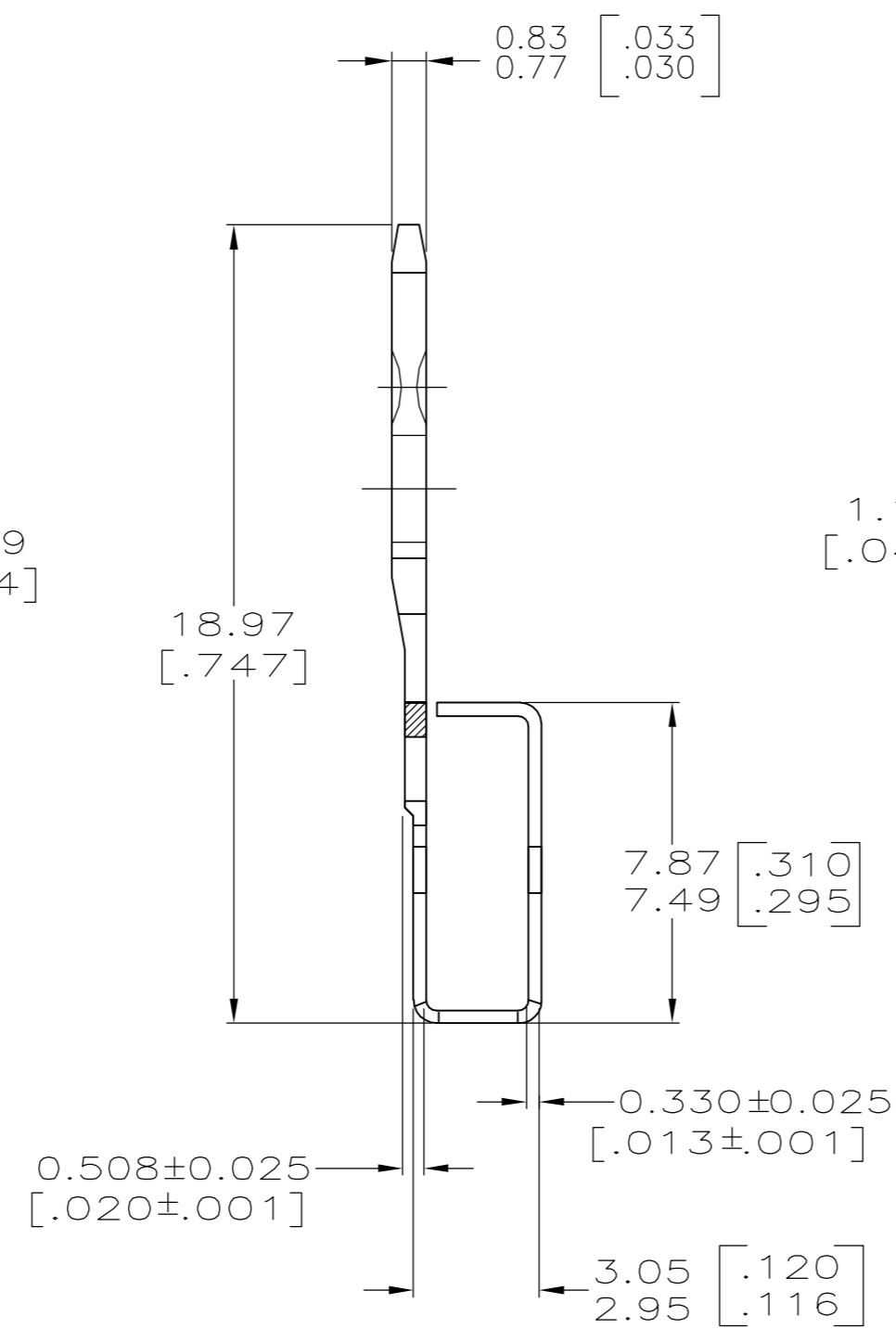
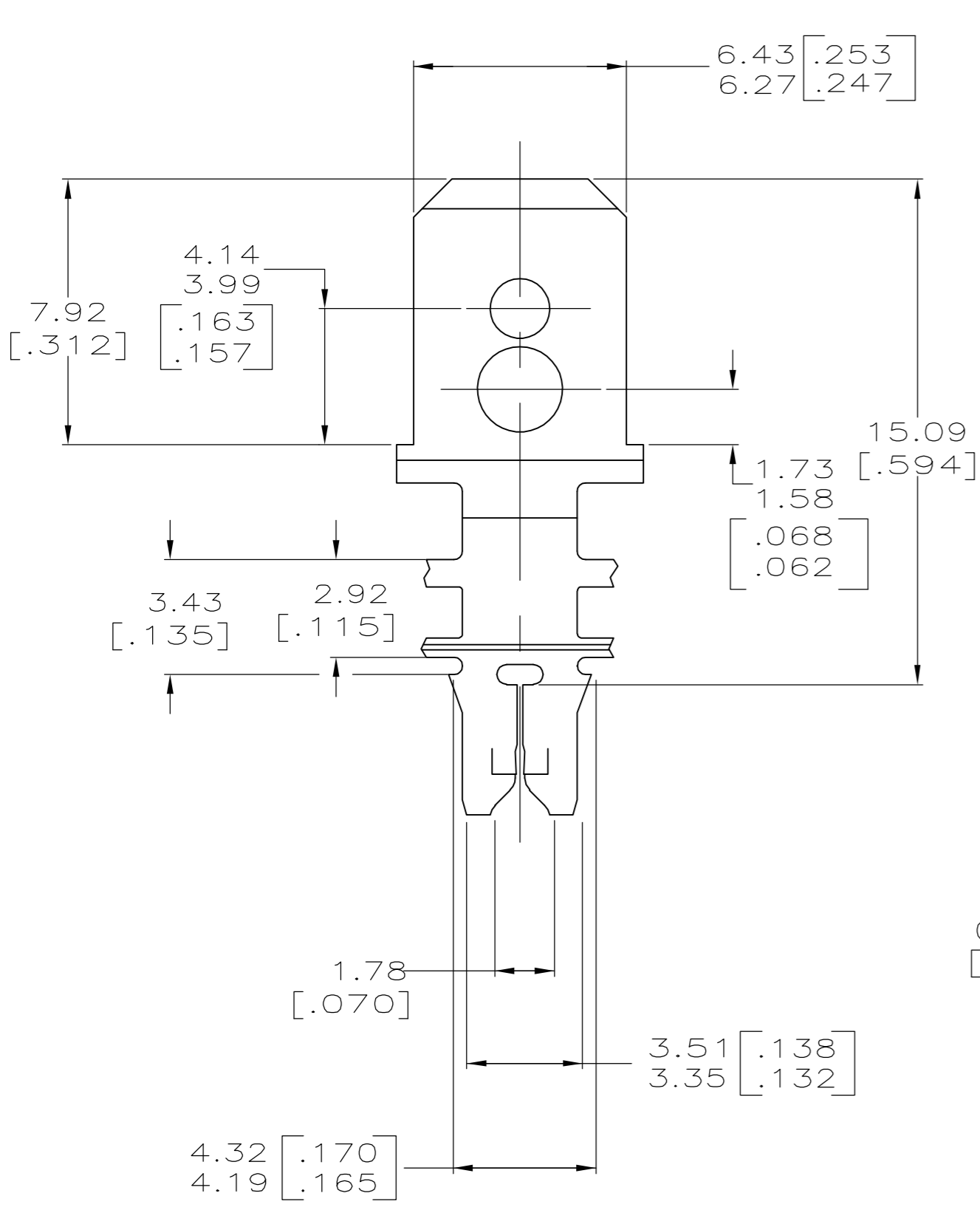


THIS DRAWING IS UNPUBLISHED. RELEASED FOR PUBLICATION
 © COPYRIGHT BY TYCO ELECTRONICS CORPORATION. ALL RIGHTS RESERVED.

LOC	DIST	REVISIONS			
P	LTR	DESCRIPTION	DATE	DWN	APVD
AF	50				
		D	REVISED PER ECR-06-010412	08NOV06	HMR KR



- 1 CONTINUOUS STRIP ON REELS WITH TERMINALS LOCATED ON 8.38 ± 0.08 [.330 ± .003] CENTERS.
- 2 SLOT TERMINATES EITHER A SINGLE OR DOUBLE MAGNET WIRE OF THE SAME TYPE AND SIZE, COPPER RANGE; 0.25–0.36mm [#30–#27] AWG.
- 3 AFTER INSERTION INTO PLASTIC HOLDER, TAB PORTION MUST BE BENT OVER 45° TO 90° OR POTTED-IN TO PREVENT PULL-OUT WHEN MATING RECEPTACLE IS DISCONNECTED.



63328-1
PART NUMBER

THIS DRAWING IS A CONTROLLED DOCUMENT.		DWN R.GRZYBOWSKI 1MAY96	tyco Tyco Electronics Corporation Harrisburg, PA 17105-3608	
DIMENSIONS: mm [INCHES]		CHK M.S.FEHER 1MAY96	NAME G.PORTA	
TOLERANCES UNLESS OTHERWISE SPECIFIED:		APVD G.PORTA 1MAY96	PRODUCT SPEC 108-2012	
0 PLC ± -		APPLICATION SPEC 114-2046		SIZE A2
1 PLC ± -		WEIGHT -		CAGE CODE 00779
2 PLC ± 0.25[.010]		CUSTOMER DRAWING		DRAWING NO C=63328
3 PLC ± -		SCALE 6:1		RESTRICTED TO -
4 PLC ± -		SHEET 1 of 1		REV D
ANGLES ± -		FINISH .002032[.000080] MIN TIN PER MIL-T-01727		
MATERIAL 082 PRE-MILLED BRASS				