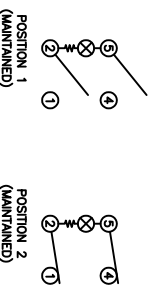


PANEL THICKNESS		X
0.030~0.049 [0.75~1.25]	1.189 [30.2]	
0.048~0.078 [1.25~2.00]	1.200 [30.5]	

**SCHEMATIC**



**SPECIFICATIONS**

**FUNCTION:** 2P1T OFF-ON  
**RATINGS:**  
 ANSI/UL 1054 and CAN/CSA C22.2 No. 55 (E194579):  
 20A 125VAC [UR-clB]  
 18A 125VAC 1/4HP [cURus]  
 18A 250VAC 1/4HP [cURus]  
 6.9A 250VAC 3/4HP [cURus]  
 ANSI/UL 1054 (233821):  
 18A 125VAC 1/4HP [CSAus]  
 18A 250VAC 1/4HP [CSAus]  
**EN 61098-1:2002 and DIN/VDE 0830-1:2003-03 (40017928):**  
 18(6) 250V~ 112S/5S 1E4 [ENEC10, VDE]  
 10(2) 250V~ 112S/5S 1E4 [ENEC10, VDE]  
 18(4) 250V~ 112S/5S 1E4 [ENEC10, VDE]  
**ILLUMINATION VOLTAGE:**  
 125V  
**CONTACT RESISTANCE:**  
 Initial: 20mΩ Max.  
**INSULATION RESISTANCE:**  
 100MΩ Min. at 500VDC  
**DIELECTRIC STRENGTH:**  
 1,000VAC for 1 Minute  
**ELECTRICAL LIFE:**  
 6,000 Cycles [cURus, CSAus]  
 10,000 Cycles [ENEC10, VDE: 18(9)A 250V~]  
 50,000 Cycles [ENEC10, VDE: 10(2)A 250V~]  
**TEMPERATURE:**  
 -20°C to 65°C [cURus]  
 -20°C to 125°C [ENEC10, VDE]  
**APPROVALS:**

**COLORS AND MARKINGS**

**BODY:** Black  
**ACTUATOR:** Transparent Green  
**MARKING:** None  
**MARKING COLOR:** None  
**FRAME:** Black

**MATERIALS**

**BODY:** Polyamide 6/6 (PA66), UL94 V-2  
**ACTUATOR:** Polycarbonate (PC), UL94 V-2  
**LAMP CARRIER:** Polyamide 6/6 (PA66), UL94 V-2  
**LAMP:** Neon Bulb  
**SPRING:** Piano Wire  
**CONTACTS:** Silver Alloy  
**TERMINALS:** Silver Plated Copper, Silver Plated Brass  
**CAP:** Polyvinyl Chloride (PVC)  
**FRAME:** Polyamide 6/6 (PA66), UL94 V-2

ACTUATOR	REV.	DATE	BY
A	09/07/08	CAB	
A	09/07/08	CAB	
A	09/07/08	CAB	
A	09/07/08	CAB	
A	09/07/08	CAB	
A	09/07/08	CAB	

1 2 3

THE INFORMATION CONTAINED IN THIS DOCUMENT IS PROPRIETARY TO E-SWITCH AND IS NOT TO BE COPIED OR TRANSMITTED

UPDATE DESCRIPTION	REV.
CONNECTED STATE TYPE	A
INITIAL RELEASE DESCRIPTION	A

REVISIONS	DATE	BY
12/19/11	BMA	
09/12/09	CAB	
09/07/08	CAB	

INCHES [MILLIMETERS]  
 GENERAL TOLERANCES ±0.008 [±0.2] / ±1'  
 PROJECTION  
 DRAWING NOT TO SCALE

**E-SWITCH**  
**LAMB INDUSTRIES**  
 RB242D1000-136ACC021  
 14-RB2500008  
 DATE: DECEMBER 9, 2009  
 REVISION: C